

BRAND NEW SEALED!!

EUCHNER GENUINE PARTS

EUCHNER

More than safety.

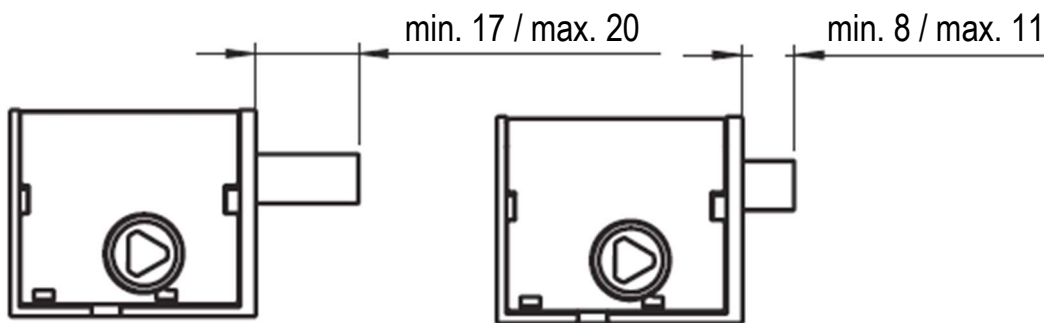


LARGE STOCK OF SAFETY SWITCH

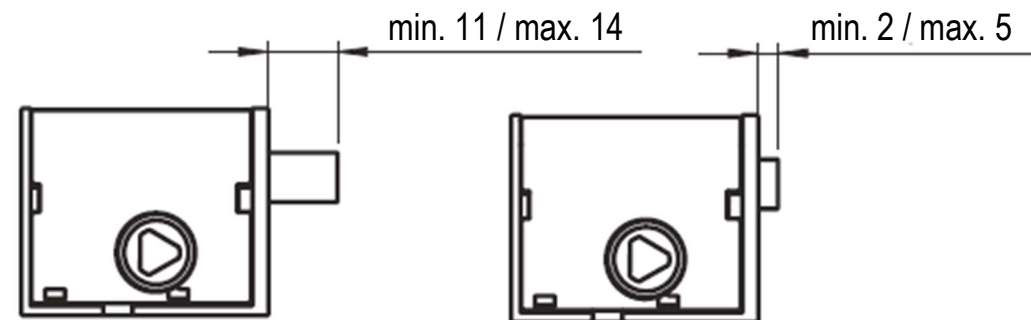
TK1-4131AB024MC2351

Same as **TK1-4131AB024M** here <https://www.euchner.de/en-us/a/099686/> with 6 mm longer pin

K1-4131AB024MC2351



K1-4131AB024M



Modification with different pin length on request (in this case seal box will be removed)

- Mounting on plastic housing TP with actuating head and guard locking pin made of metal
- High locking forces of 5000 N
- Auxiliary release on the switch head
- Actuating element for contact separation on the front
- Cable entry M20 x 1.5

Solenoid operating voltage

- AC/DC 24 V +10%, -15%

Guard locking type

TK1 Closed-circuit current principle, guard locking by spring force. Release by applying voltage to the guard locking solenoid.

Switching element

4131 Slow-action switching contact 2 NC + 2 NO

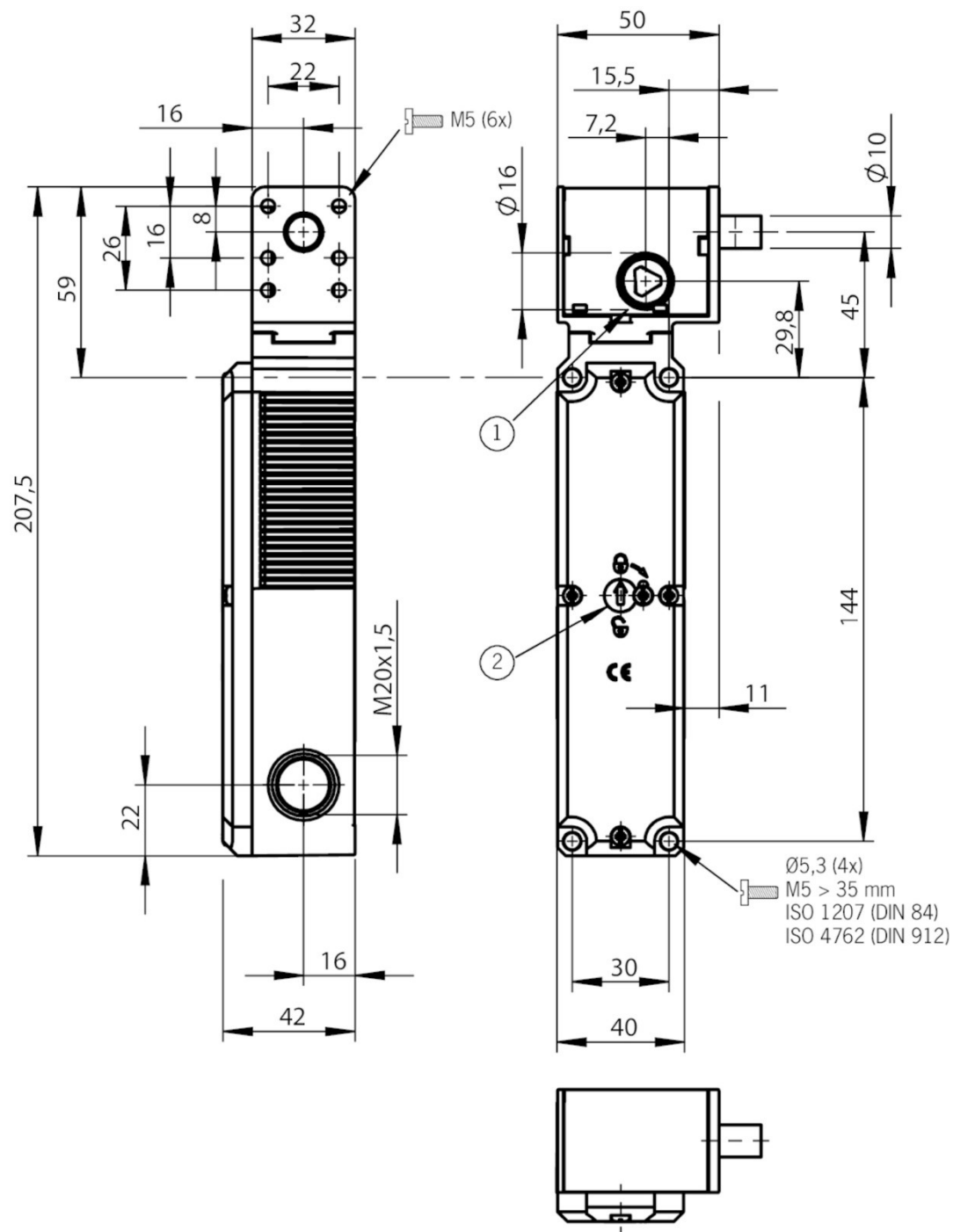
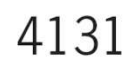
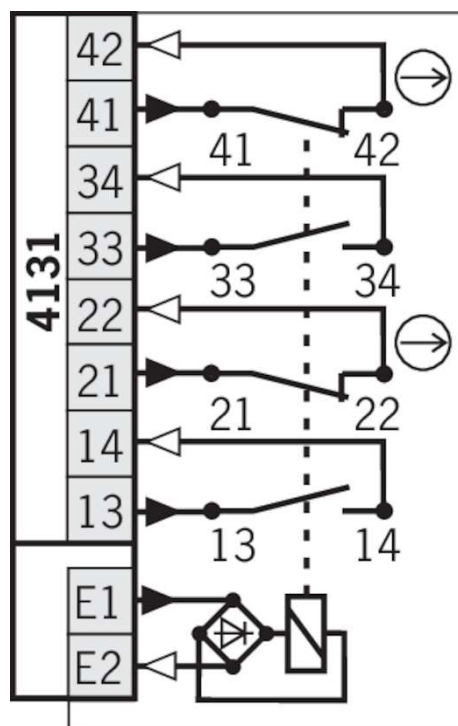
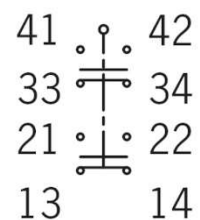
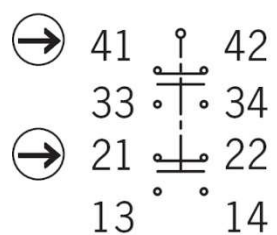
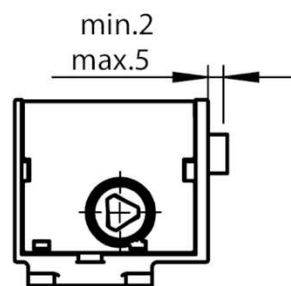
Auxiliary release

Is used for releasing the guard locking with the aid of a tool.

Contact separation

When actuated, positively driven NC contacts 41-42 are opened. Guard locking is not fully unlocked. The auxiliary release must be sealed to prevent tampering (e.g. with sealing lacquer).





EUCHNER

TK1-4131AB024MC2351
112744
GO



112744001973
70771 Leinfelden
Made in Germany



CE



EUCHNER

TK1-4131AB024MC2351
112744
GO



112744001973
70771 Leinfelden
Made in Germany



CE



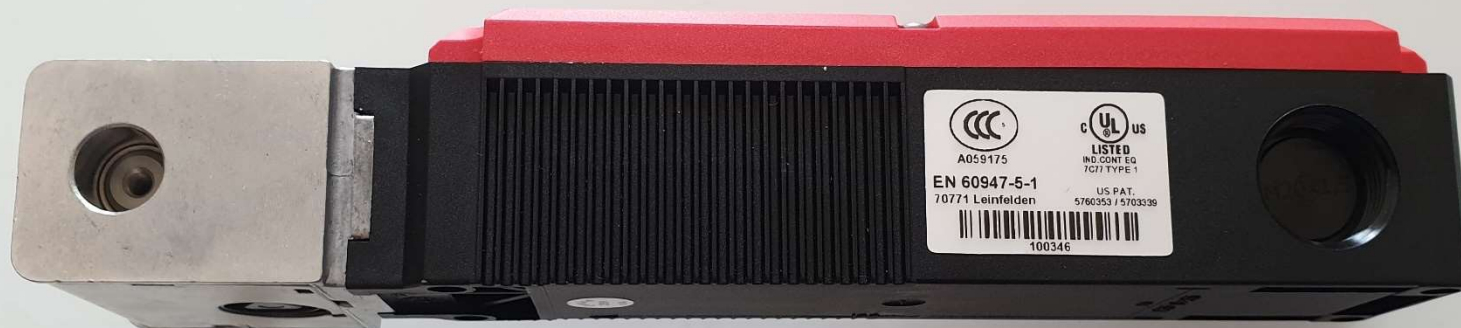




TK1-4131A5024MC2351
Safety Switch
ID-NR.: 112744
UI = 250V
Us = DC 24V
Euchner GmbH & Co. KG, Kallhammstr. 16, 70771 Leinfelden
112744 002492

| E1 | E2 |
|----|----|
| 41 | 42 |
| 33 | 34 |
| 21 | 22 |
| 13 | 14 |

13



CCC
A059175
EN 60947-5-1
70771 Leinfelden
UL US
LISTED
IND. CONT. EQ
TCL TYPE 1
US PAT.
5760353 / 5703339
100346

